



# Currents

Protecting The Natural  
Resources, Beauty And  
Character Of Lands In  
The Strafford County Area

Founded in 1989

Summer 2007



## THE PRESIDENT'S LETTER

Greetings, Members and Friends of The Strafford Rivers Conservancy,

The start of the summer of 2007 finds the SRC Board and staff extremely busy. With over 30 land protection projects in various stages of completion there is barely time to enjoy the recent warm days, welcome our returning avian friends, tend to our gardens or paddle our favorite waterways. The current workload does mean that we are being successful at meeting one of our strategic plan goals; expanding land protection efforts. It also means that we have lots of wonderful stories to share; several of which are highlighted in this newsletter.

We have made new strides towards two other goals in the organization's strategic plan: securing an office and increasing staff. In March we obtained an office overlooking the Cochecho River at One Washington Place—The Picker Building in Dover. (see picture) In November 2006, the SRC welcomed John Wallace to our staff as part-time Land Agent. (see article)

In addition to organization support, cultivation of landowner relations and response to endless inquiries, Executive Director Anna Boudreau has been developing a new fundraising strategic plan with Chris Strong of The Strong Resource Group. The purpose of this plan is to attract a greater number of members and donors through education about our organization and incentives to protect land in projects both broad and focused. The SRC is a nonprofit 501(c)(3) organization and relies heavily on donations in order to be successful. Saving land takes people. Both the dedicated support of our members as well as grant funding ensure the SRC's ability to continue its valuable work.

(Continued on page 2)

## THE SRC WELCOMES A NEW STAFF MEMBER



New Land Agent, John Wallace

The SRC is pleased to announce the addition in November 2006 of John Wallace to staff in the role of Land Agent. John is working on land transactions involving meeting with landowners and securing conservation easements. He continues to work on easement stewardship through the Lands Committee, monitoring easements and producing baseline documentation reports. John's capability, skills and commitment are valuable and very appreciable in helping to cope with the increasing number of projects before the SRC.

Prior to moving to NH, John, who earned his PhD in Biochemistry at the University of Pittsburgh, held postdoctoral research positions at the Medical School in Strasbourg, France and at

Purdue University. After being on faculty at Bucknell University, he became a "stay at home" Dad while continuing some involvement in the Plant Biology Department at the University of New Hampshire.

John became active on the Barrington Conservation Commission after his move there 11 years ago and learned about land conservation from that perspective. In recognizing the need for and role of a regional land trust, he joined the Board of the SRC in 2004. John lives in Barrington with his wife, Lessa Brill, a physician in student health at UNH, daughter, Penina and son, Simon.



The door is open at our **new office** located at 2 Washington Street, Suite 312, Dover, NH 03820.

This is The Picker Building which is behind the Clarostat Building. Our **mailing address** will continue to be PO Box 623, Dover, NH 03821-0623

**The SRC is Primary Easement Holder on 20 easements totaling 877 acres.**  
**The SRC is Backup Easement Holder on 18 easements totaling 858 acres.**  
**The SRC owns 47 acres. A grand total of 39 properties and 1782 acres!**

**"THANK YOU to Jim Smith of Seacoast Computer, Inc. for donating a computer for the new SRC office!"**

(Continued from page 1)

I want to recognize the SRC member generosity and collaboration with our land protection partners as exemplified by the Tuttle Farm and Teneriffe Mountain projects. Because of members' and donors' remarkable participation these significant parcels and the indigenous wildlife and ecological resources therein will be preserved in perpetuity. Thank you.

With generous support from our members and donors combined with a dedicated Board of Directors, staff and volunteers, we can carry out the conservation work that is best described in the words of conservationist Gifford Pinchot, the Chief of the United States Forest Service(1905-1910): "The purpose of conservation is: The greatest good to the greatest number of people for the longest time."

**Kevin McEaney**, President of The Strafford Rivers Conservancy



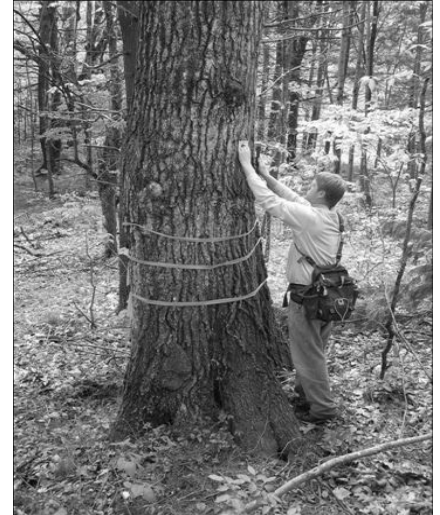
## PROGRESS UPDATES FROM THE LANDS COMMITTEE

By John Wallace

When it rains it pours! This refers not only to the weather patterns seen through much of this spring, but to the flood of activity that has been coming before the Lands Committee. At our May meeting there were no fewer than 32 projects on the agenda! Not all of these are "hot burner" items requiring a lot of attention at present, and some are being managed by town conservation commissions or other organizations, but no matter how you look at it, our plate is very full at the moment.

Since the last newsletter, the conservancy has accepted easements on three properties: phase I of the **Panish Teneriffe Mountain** project in Milton, the **England Road Reserve** in Rochester, and the final phase of the **Tuttle Farm** in Dover. The combination of funding in the preservation of the 120 acre property of the **Tuttle Farm** is the culmination of a huge collaborative effort between the NHDOT, the City of Dover and the Federal Farm and Ranchland Protection Program. This historic working farm with its environmental and cultural values will remain as open space to be enjoyed by future generations.

(Continued on page 4)



Volunteer Matt Polzin setting new SRC boundary markers at the England Road Reserve easement.

### The Strafford Rivers Conservancy

**Officers:**

Kevin McEaney, Dover, President  
Sam Reid, Dover, Treasurer  
Steve Dibble, Rochester, Secretary

**Board Members:**

Nancy Carmer, Rollinsford  
Bill Humm, Lee  
Kitty Miller, Lee  
Andre Vanderzanden, M.D., Rochester

**Board Advisor:** Susan Arnold

**Staff:**

Anna Boudreau, Executive Director  
John Wallace, Land Agent

**Volunteer Staff:**

Barbara Rushmore: *Currents* Editor  
David Price: Special Projects Technician  
Matt Polzin: Easement Monitor

P.O. Box 623  
Dover, NH 03821-0623

Phone (603) 516-0772

www.straffordriversconservancy.org

## TENERIFFE MOUNTAIN PROJECT A SUCCESS!

**Thanks to the generosity** of our members, anonymous donors and our board of directors, the SRC was successful in raising the matching funds needed for the federal Farm and Ranchland Protection grant to preserve part of Teneriffe Mountain in Milton. Congratulations to all! This was truly a community effort with donors ranging from Rollinsford to Rochester, Milton to Madbury; literally all over the county. This parcel was preserved in two Phases. In Phase I, landowner Steve Panish granted a conservation easement to the SRC on 87 acres of his property as a complete donation. This closing occurred in December of 2006. Phase II protected the remaining 15 acres that consist of blueberry fields on the property. The signing of that conservation easement deed was held on June 14<sup>th</sup>, 2007. Look for our announcement in the fall inviting you on a tour of the property.

*The SRC gratefully acknowledges the support of these generous donors!*

- Anonymous*
- Richard Adams*
- Robin Aikman*
- Susan Arnold*
- Back Channel Canvas Shop*
- Cynthia & Peter Belowski*
- Donald Bolstridge*
- Carl Seimon Family Charitable Trust*
- John & Diana Carroll*
- Ellen Cascadden*
- John & Mary Caulfield*
- Jonathan & Dorothy Chorlian*
- Ann C. & Arthur B. Corte*
- William Danford*

- Joyce El Kouarti*
- Peter Fabian*
- Jane Cooper Fall*
- George & Paula Frick*
- Janis & Stephen Frisselle*
- David Funk*
- James Haley*
- Francis Hall*
- Rita Hibschweiler*
- Pam & Dan Hubbard*
- Mr & Mrs Philip Johnson*
- Peter T. Keefe*
- Mr. & Mrs. Robert D. Lewis*
- Susan & William Lowe*
- Laurie & Bob Lynch*
- McEaney Survey Associates Inc.*
- Amanda Merrill*
- Milton Hardware, LLC*

- Robert Munger & Jill Nooney*
- Gordon and Carolyn Page*
- Herman and Pearl Pelletier*
- Sally & Bob Puth*
- Lucy & Charles Putnam*
- Barbara Rushmore*
- Mr. & Mrs. William J. Sammis*
- Keith Schmitt*
- Clay Serenbetz*
- Lenore Ekwurtzel & Jim Smith*
- Bruce & Anne O. Smith*
- Bill & Karen Staines*
- McGivern & Thayer Family*
- Sylvia Thayer*
- Peter & Thelma Thompson*
- Andre Vanderzanden*
- Cynthia Siemon Wyatt*
- Peter Yarensky*



## LAND PROTECTION EFFORTS THROUGHOUT STRAFFORD COUNTY, NH A Conservation Profile of the Town of Milton, New Hampshire

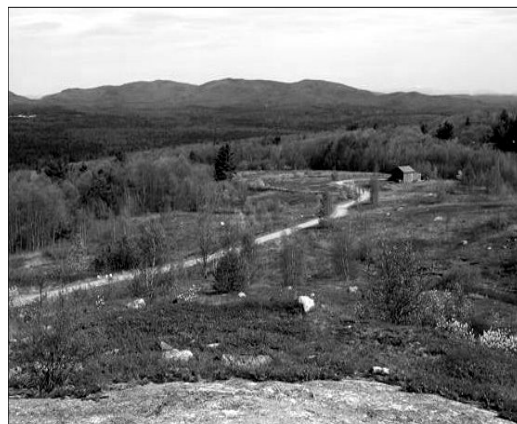
By Cynthia Wyatt and Steve Panish, Milton Conservation Commission

The total area of the town of Milton, in northern Strafford County, is about 27,000 acres. According to UNH's GRANIT web site (<http://www.granit.sr.unh.edu/>), which is the main source for a variety of geographic information about the state, about 2,700 acres is conserved by some level of protection. Most of the cities and towns in the county can be jealous of this 10% level of preservation.

The majority of this conserved land is owned by the Carl Siemon Family Charitable Trust; a private foundation which granted a conservation easement on approximately 1500 acres to the Society for the Protection of NH Forests in 1991. The Forest Society itself owns 297 acres of land in the town (the Jones Forest), and The Nature Conservancy and The University of New Hampshire also own sizable lands in conservation.

Smaller conservation parcels were acquired and/or donated in the 1990s to protect ecologically sensitive areas along Dames Brook, Lyman Brook, Town House Pond, and Jones Brook.

In recent years the town has had a more proactive role in protecting land in Milton through its conservation commission.



A lovely, panoramic view from the top of Teneriffe Mountain in Milton, NH showing the path to the blueberry fields.



Robin Aikman, Strafford County Conservation District, Steve Panish, Landowner and Anna Boudreau, Executive Director of the SRC at the Phase II closing on the Teneriffe Mt. Project.

With money from its conservation fund, it has helped with transaction costs associated with the Long easement--30 acres along the Branch River, and the Current easement--17 acres of fields and forest in the Teneriffe Mountain area. Most recently, the town contributed \$25,000 towards Phase II of the Teneriffe Mountain project, outlined elsewhere in this newsletter, completing the protection of over 100 acres at the summit of Teneriffe Mountain, the geographic center of Milton.

In addition to Teneriffe Mountain and its blueberry fields, the SRC holds the easement on the Long parcel, and is executory (backup) easement holder on the Current property and on the Shortridge Farm, 10.3-acres on Governor's Road. The conservation commission continues to collaborate with the SRC to actively expand and connect more conserved lands throughout the Teneriffe Mountain area for the enjoyment of present and future generations.



Clip this coupon or visit [www.stafforddriversconservancy.org](http://www.stafforddriversconservancy.org) & click "Make a Gift Now!" & click Donate/JustGive.org

**YES! I/We support the Strafford Rivers Conservancy (SRC) in conserving and protecting Strafford County's natural resources!**

*Enclosed is my tax-deductible gift.\**

Benefactor \$2500

Sponsor \$500

Steward \$150

Contributor \$60

Conservator \$1000

Partner \$250

Sustainer \$100

Supporter \$35

\* This gift qualifies for a matching gift program. (Enclosed is my gift form).

Name (s) \_\_\_\_\_ E-mail \_\_\_\_\_

Street/PO Box \_\_\_\_\_ City/Town \_\_\_\_\_

State \_\_\_\_\_ Zip \_\_\_\_\_ Tel \_\_\_\_\_ You may \_\_\_\_\_, may not \_\_\_\_\_ use my name acknowledging SRC support

Please send me information on:  conserving my property,  estate planning or planned giving options

Please make your check payable to The Strafford Rivers Conservancy and send it with this coupon to P.O. Box 623, Dover, NH 03821-0623. For additional information, please call (603) 516-0772 or visit [www.stafforddriversconservancy.org](http://www.stafforddriversconservancy.org). e-mail us at [info@stafforddriversconservancy.org](mailto:info@stafforddriversconservancy.org). **THANK YOU!**



## The Strafford Rivers Conservancy

P.O. Box 623

Dover, NH 03821-0623

(603) 516-0772

NON PROFIT ORG.

U.S. POSTAGE PAID

DOVER, NH

PERMIT NO. 28

[www.straffordriversconservancy.org](http://www.straffordriversconservancy.org)

ADDRESS SERVICE REQUESTED

*Since 1989, protecting the natural resources, beauty and character of lands in the Strafford County area.*

### The Newsletter of The Strafford Rivers Conservancy

Founded in 1989, The Strafford Rivers Conservancy is a nonprofit land trust dedicated to the protection of the natural resources, beauty and character of the land throughout Strafford County. The conservancy's mission is accomplished through education, advocacy and the acquisition of development rights of environmentally significant land to ensure that it remains undeveloped forever.

*For further information about land protection options for landowners call (603) 516-0772 or send your letters to The Strafford Rivers Conservancy, P.O. Box 623, Dover, NH 03821-0623. e-mail us at [info@straffordriversconservancy.org](mailto:info@straffordriversconservancy.org)*

(Continued from page 2)

The land at the end of England Road in Rochester is largely forested, with wetlands supporting a wide variety of animal and plant life. In addition, several acres of the 33.5-acre parcel are farmed as hay fields. It is owned by Waste Management of New Hampshire (WMNH) and is across the Cocheco River from their operation at the Turnkey Recycling and Environmental Enterprise facility. In part, the area is being put into conservation in accordance with a wetland permit issued for the facility's future operations as approved by the State and the Department of Environmental Services. We are talking with WMNH about working together to protect more of the undeveloped land along the Cocheco River in this area. Low-impact recreational activities such as hiking, bird watching, fishing, and cross-country skiing are allowed on the property whereas motorized vehicle use will not be permitted.

Although we are working on projects in just about every town and city in Strafford County (and beyond!), we hope to be closing soon on projects in Barrington, Dover, and Lee, as well as finalizing the protection of the Hickory Hill Farm in Dover, which includes a pick-your-own strawberry operation. I look forward to reporting on those in the next newsletter.

#### INSIDE VIEW

- President's Letter
- New Staff Member
- New Office Location
- Progress Updates From The Lands Committee
- Teneriffe Mountain Project Closes on Phase II
- Conservation Profile of the Town of Milton, New Hampshire
- Membership Coupon


  
**Be a Part of**  
**Protecting and**  
**Conserving**  
**Special Places in and**  
**around**  
**Strafford County**  
 See Gift  
 Coupon Inside



For the first time in 12 years **the SRC will not hold the Great Cocheco Boat Race** this summer. The timing of the tides combined with the need to focus energies on land projects in the pipeline led us to this decision. We will revisit this much enjoyed signature event next year!